



**WELCOME**

# Roundabout Public Education Centre

**October 4, 2012**

**The Windsor-Essex Parkway**



General Presentations at 4:30 p.m. and 6:00 p.m.

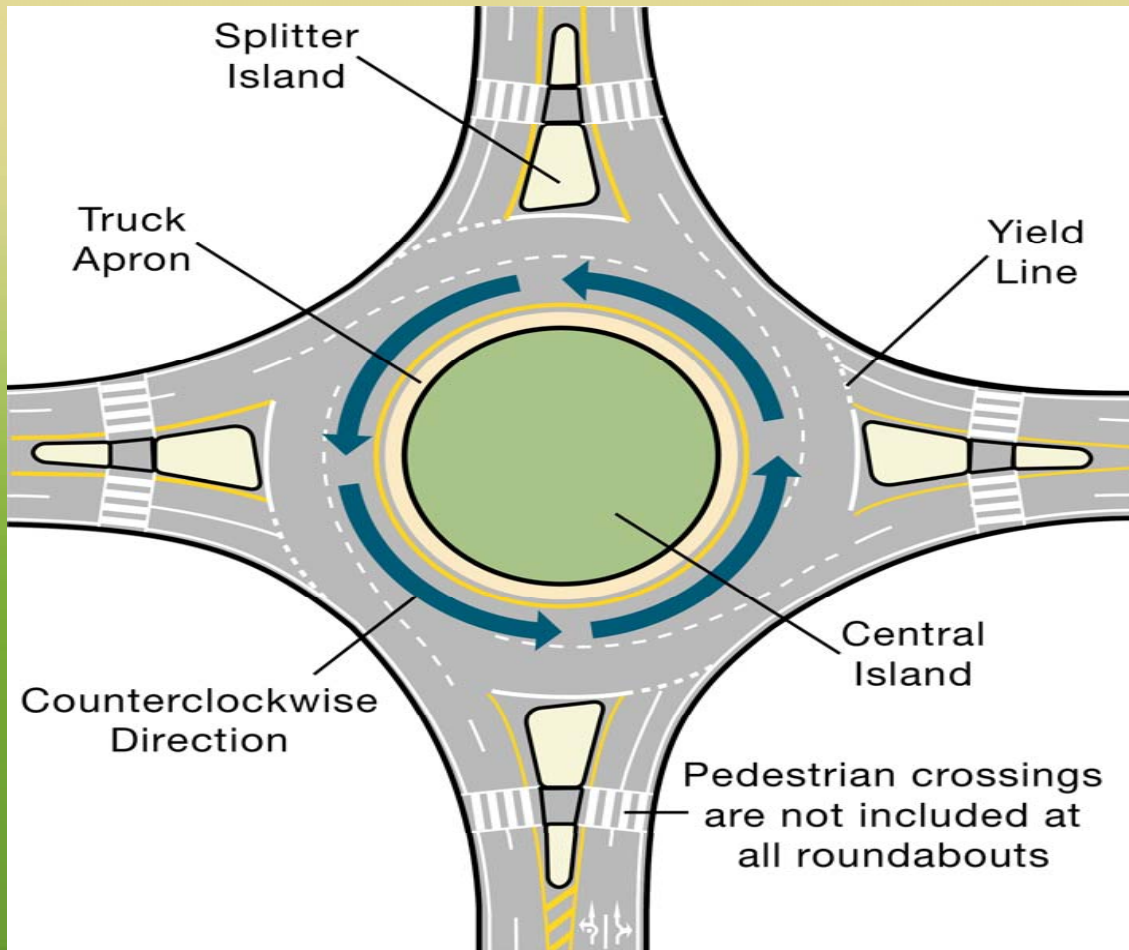
## Purpose of the Windsor-Essex Parkway Roundabout Public Education Centre

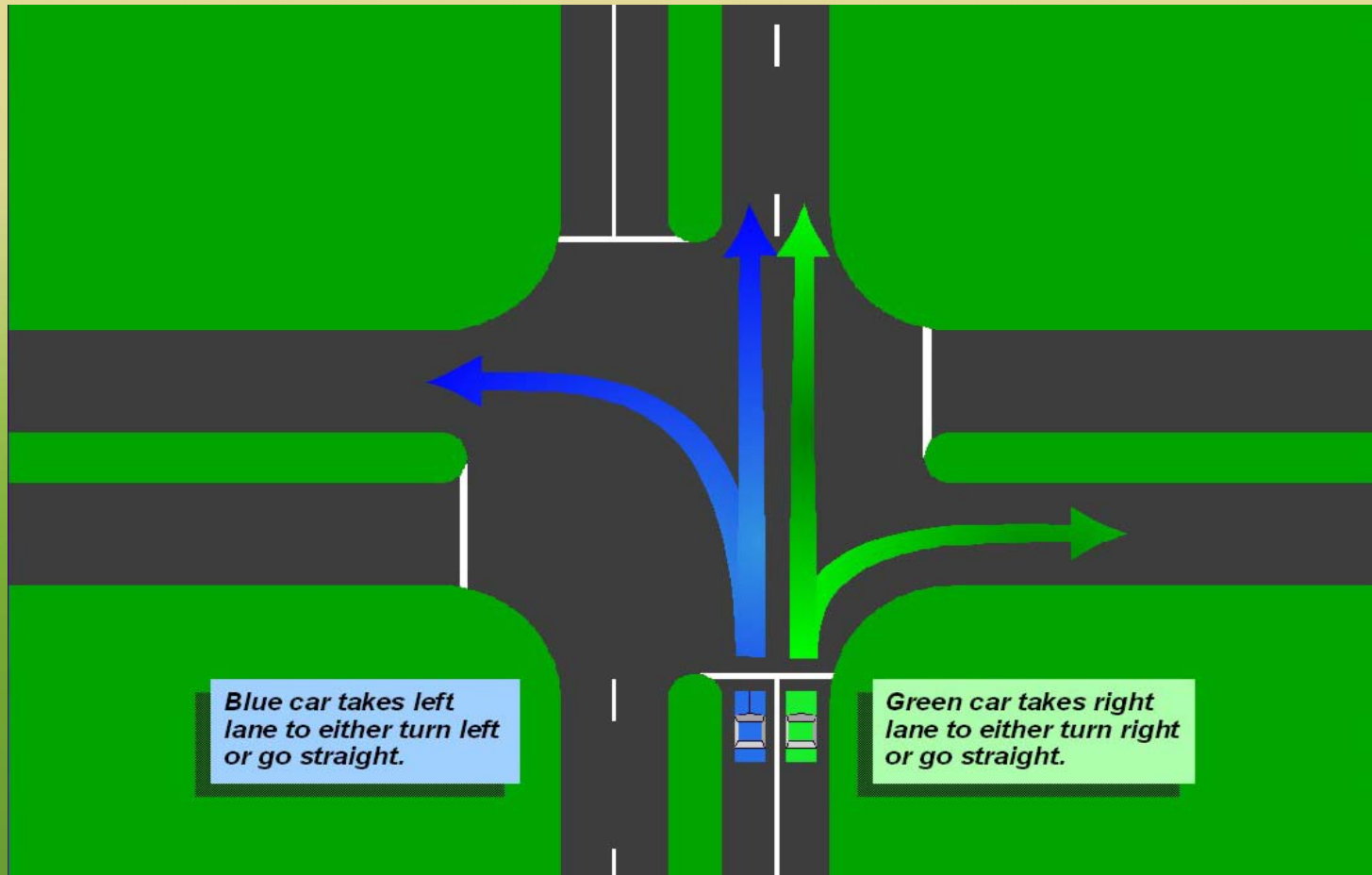
- features and benefits of the roundabout
- teach drivers how to safely enter and exit the Parkway roundabout
- proper signalization
- what to do when you encounter an emergency vehicle at roundabout
- signs to look for to help drivers get to where they are going.

- A multi-lane roundabout is opening to traffic where the Howard Avenue Diversion (County Road 9) meets Highway 3 and Highway 401 on/off ramps.
- The roundabout is a permanent feature of the Windsor-Essex Parkway.
- No pedestrian crosswalks are installed as part of the roundabout.
- Pedestrians and cyclists are not permitted to use the roundabout.
- Advisory speed limits through the roundabout are 30 km/h.
- Travel counter-clockwise in the roundabout.
- Yielding at the roundabout entrance, drivers must wait for a safe gap in traffic to enter.

**As a result of consultation with local municipalities during the DRIC study, a modern multi-lane roundabout was incorporated into the design of the Windsor-Essex Parkway at the intersection of Highway 3/Howard Avenue Diversion (County Road 9) and the Highway 401 on/off ramp terminals of the Windsor-Essex Parkway.**

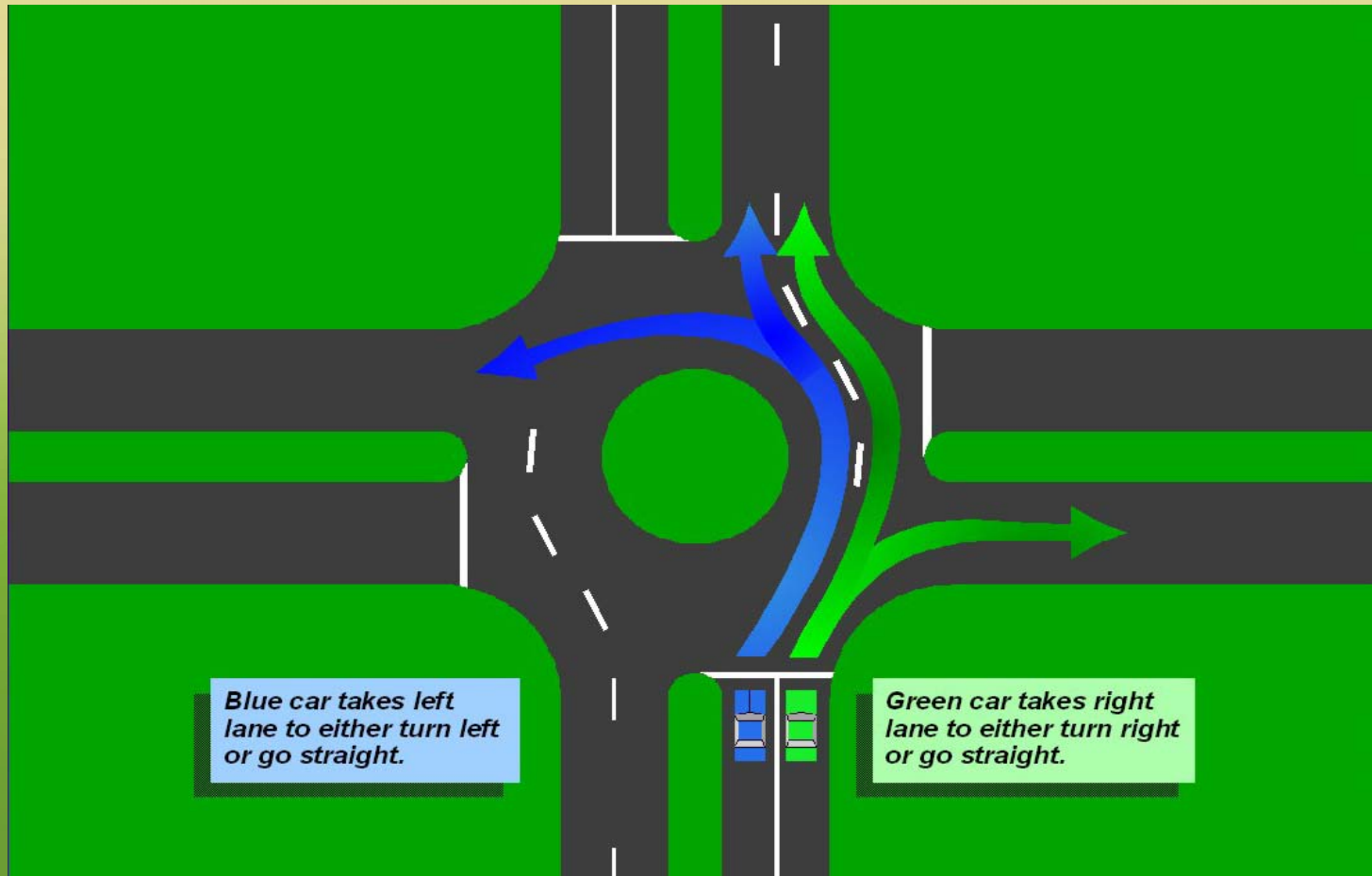
**The roundabout will reduce the potential for severe collisions and serious injuries, reduce noise and air pollution by removing the idling of stopped vehicles and reduce delays and improve traffic flow.**





*Blue car takes left lane to either turn left or go straight.*

*Green car takes right lane to either turn right or go straight.*



*Blue car takes left lane to either turn left or go straight.*

*Green car takes right lane to either turn right or go straight.*

- Slow down and keep to the right of the splitter island as you approach the roundabout.
- Depending on your intended destination choose the left or right lane.
- Yielding at the roundabout entrance, you must wait for a safe gap in circulating traffic to enter.
- When there is a safe gap in circulating traffic, enter the roundabout.
- Do not enter and merge beside a vehicle already circulating, even if it is travelling beside the central island.

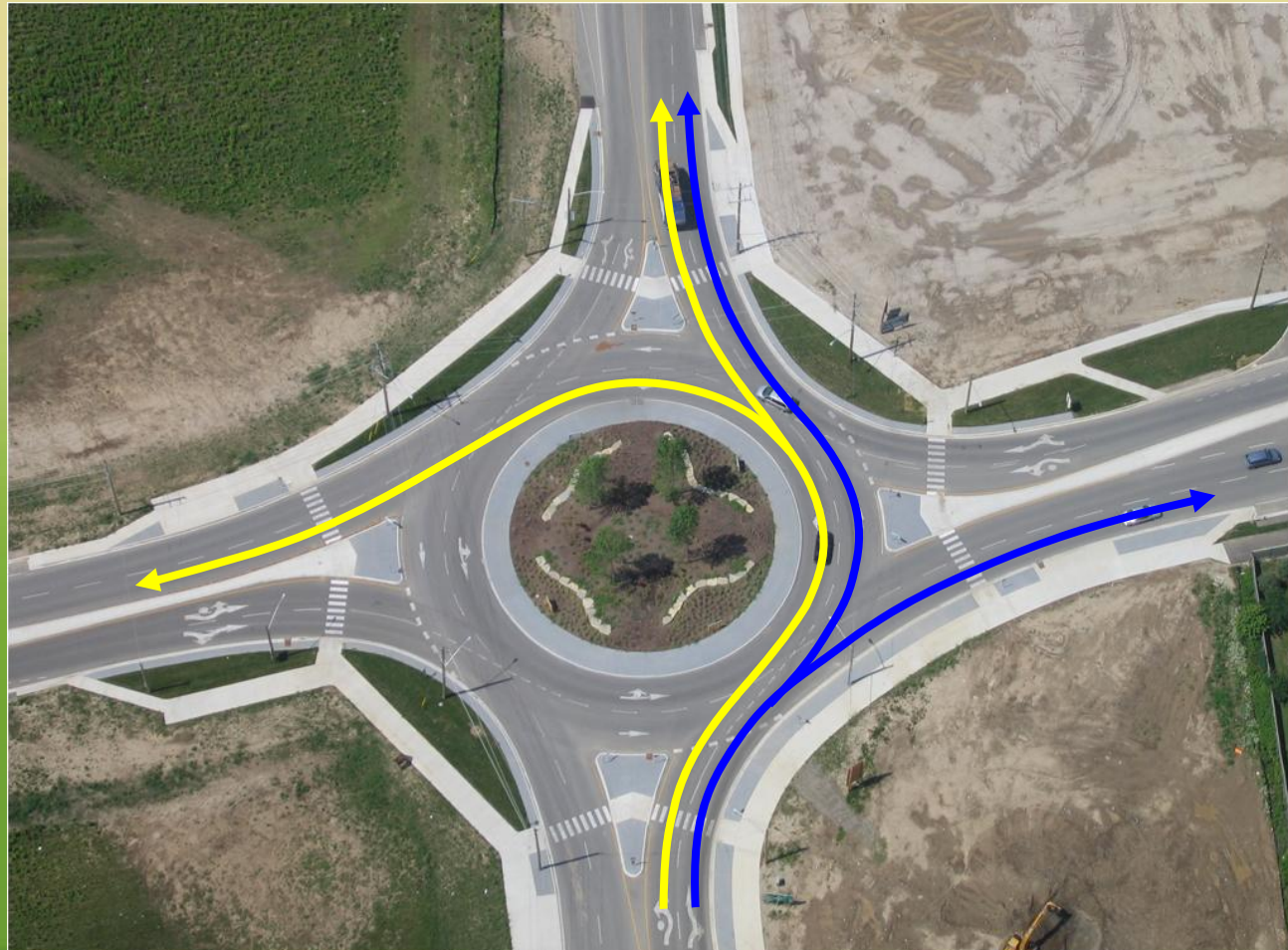


- To make a left turn you must move into the left lane when approaching the roundabout.
- Yielding at the roundabout entrance, you must wait for a safe gap in circulating traffic.
- When there is a safe gap in traffic, enter the roundabout.
- Once the in the roundabout, stay in the left lane.
- When approaching the intended exit, signal right and exit the roundabout from the left lane.

- To make a right turn you must move into the right lane when approaching the roundabout.
- Yielding at the roundabout entrance, you must wait for a safe gap in circulating traffic.
- When there is a safe gap in traffic, enter the roundabout.
- Once in the roundabout, stay in the right lane.
- When approaching the intended exit, signal right and exit the roundabout from the right lane.

- Drivers heading straight through may use either the left or right lane when approaching the roundabout.
- Yielding at the roundabout entrance, you must wait for a safe gap in circulating traffic.
- When there is a safe gap in traffic, enter the roundabout.
- Once in the roundabout, stay in your lane.
- When approaching the intended exit, signal right and exit the roundabout while staying in your lane.

- Use the right entry lane for right turns.
- Use the left entry lane for left turns.



- If you have not yet entered the roundabout, pull over to the right if safe to do so, allowing the emergency vehicle to pass and then enter the roundabout. You may only enter the roundabout once the emergency vehicle has exited the roundabout.
- If you are in the roundabout when an emergency vehicle enters, stay calm, continue on your route within the roundabout and take your intended exit. Do not pull over if you are in the roundabout.
- If you and the emergency vehicle behind you are using the same exit, once you have exited the roundabout and passed the splitter island, pull over to the right, allowing the emergency vehicle to then pass.
- Drivers should be aware that in no circumstance, except to avoid a collision, should you ever stop in the roundabout.

- The roundabout was designed to accommodate all motor vehicles including the turns and movements of larger vehicles, such as trucks, buses and other large vehicles.
- Give extra space for large vehicles including trucks and buses.
- Large vehicles may need to use both lanes of the roundabout including the truck apron.
- Large vehicles may need to occupy both lanes when entering, circulating and exiting the roundabout.



Do not make a turn left by turning sharply in front of the central island and travelling clockwise.



Do not make a left turn from the right entry lane.





Do not enter by merging beside circulating vehicles, even if they are travelling next to the central island.





ADVANCED ROAD AND DESTINATION –  
OVERHEAD SIGNS



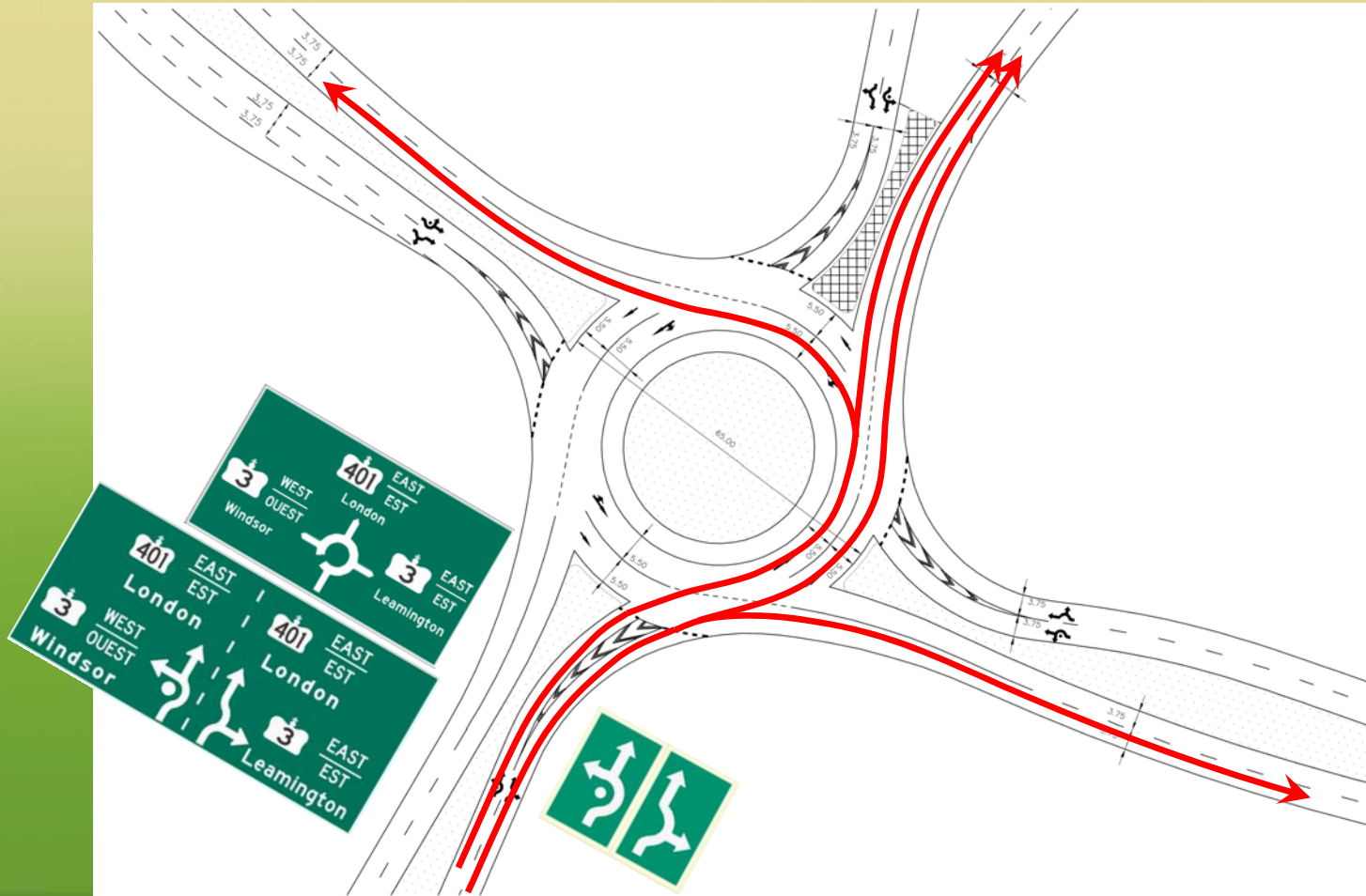
EXIT ROAD ID AND EXIT DESTINATION

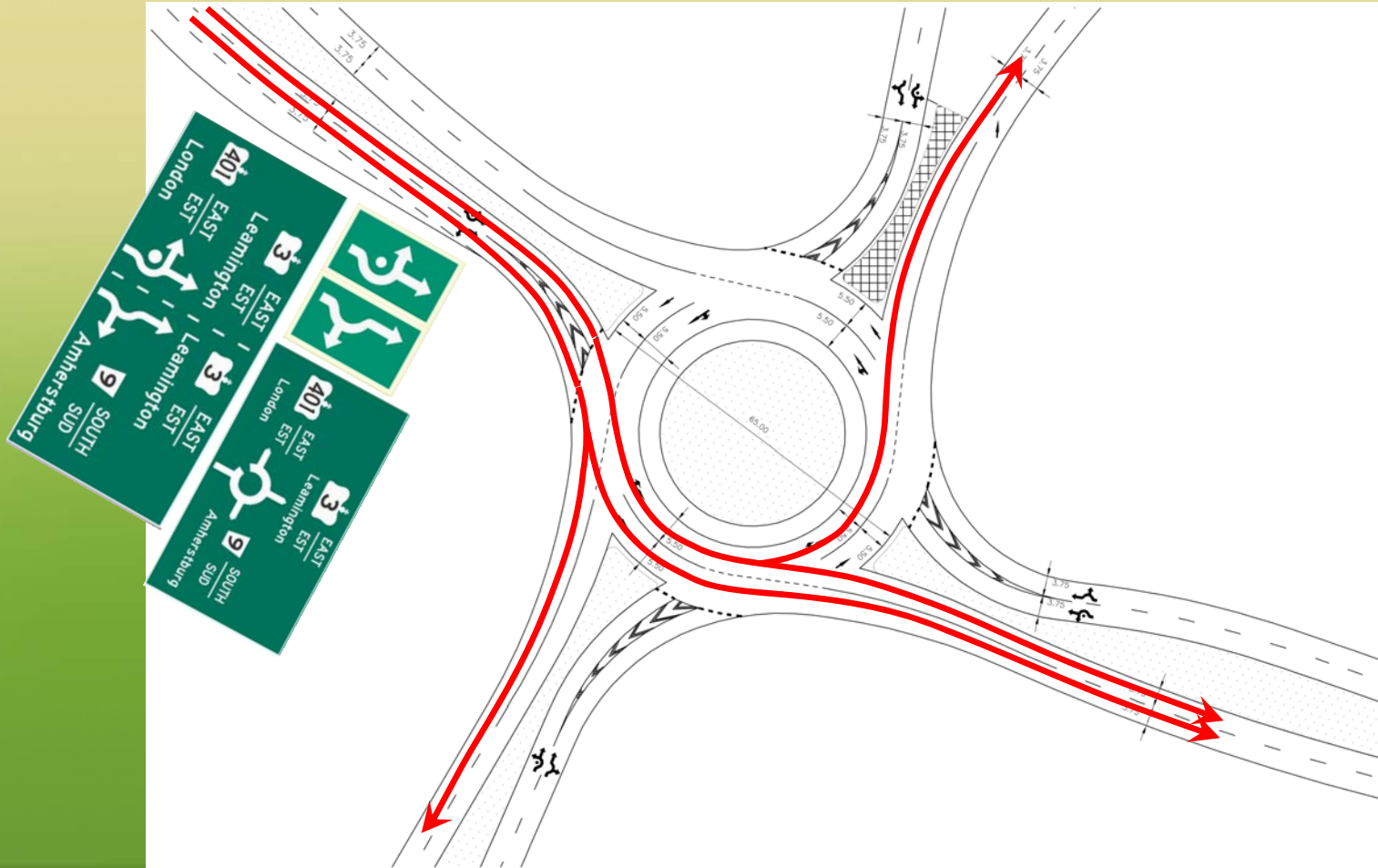


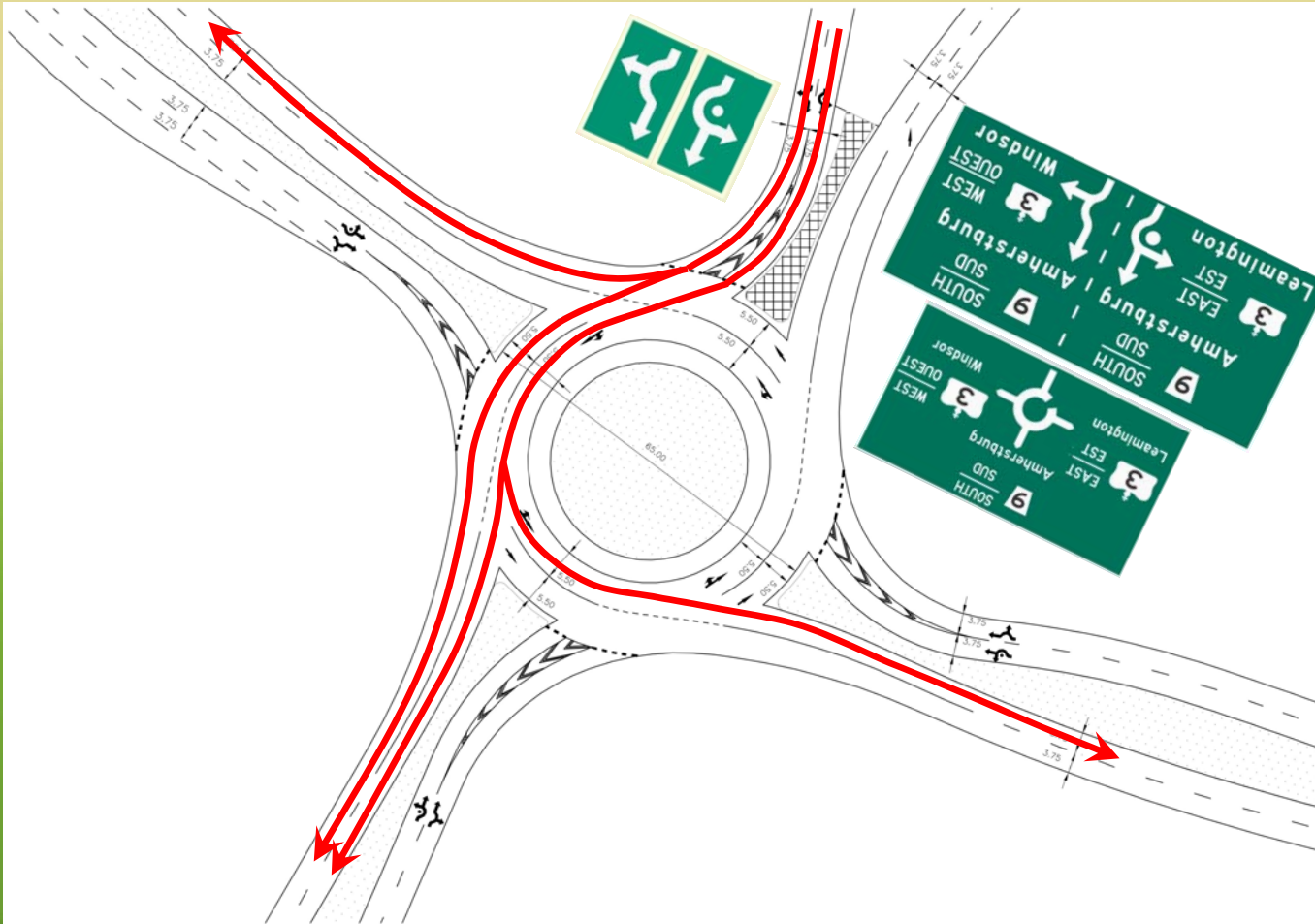
LANE DESIGNATION

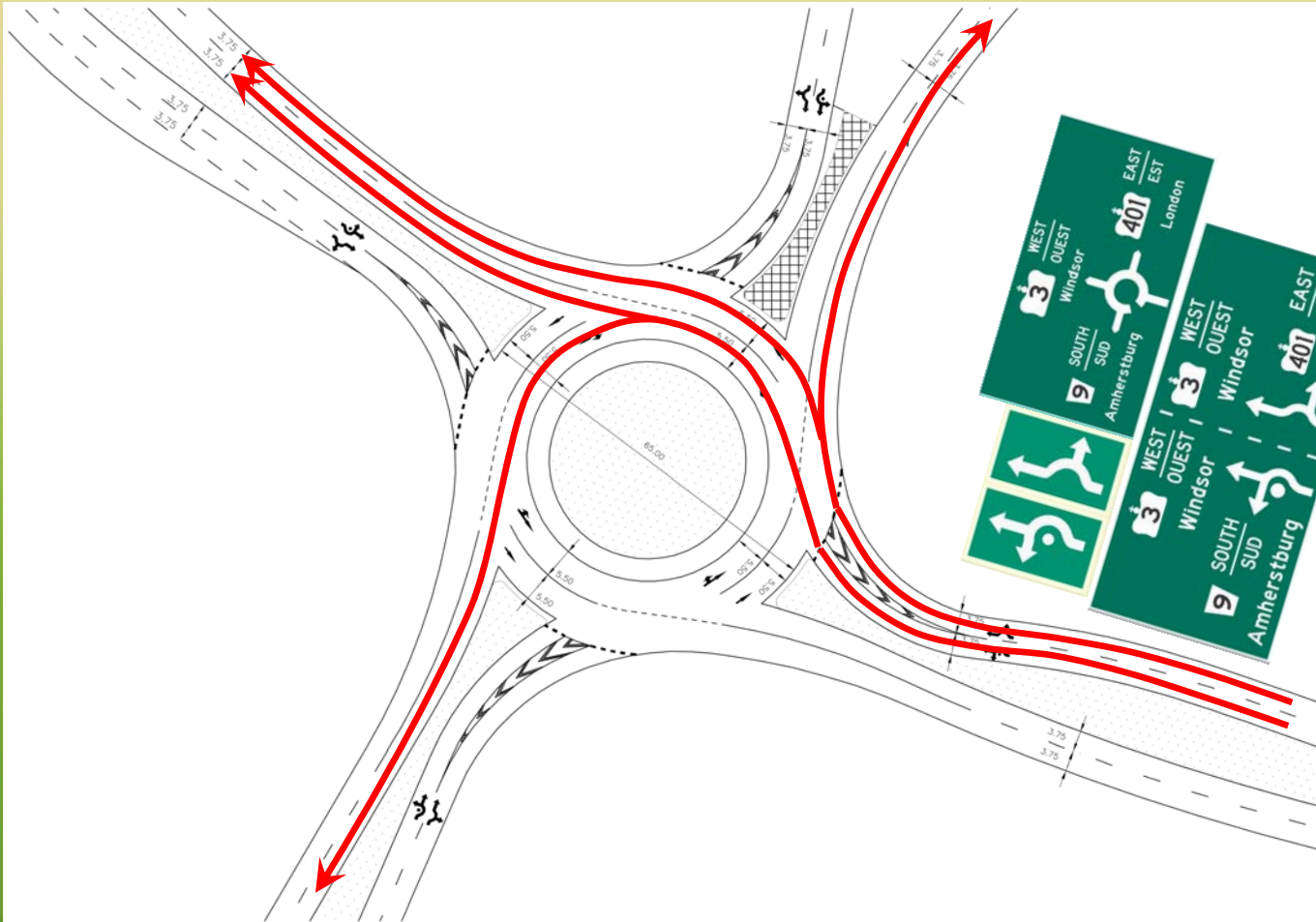


ADVANCE ROAD AND DESTINATION –  
GROUND MOUNTED









## Thank you for attending this Roundabout Public Education Centre

Please submit your comment form in the comment box  
or to one of the addresses below:

**Ministry of Transportation**  
949 McDougall Avenue, Suite 200  
Windsor, N9A 1L9  
email: [detroit.river@ontario.ca](mailto:detroit.river@ontario.ca)  
(519) 973-7367

**WEMG Public Liaison Office**  
2187 Huron Church Road, Suite 340A  
Windsor, N9A 1L8  
email: [wep-plo@wemg.ca](mailto:wep-plo@wemg.ca)  
1-877-WE-PKWAY (937-5929)

## For more information

Visit us online at: [www.weparkway.ca](http://www.weparkway.ca)

Follow us on Twitter - [www.twitter.com/weparkway](http://www.twitter.com/weparkway)

Like us on facebook - [www.facebook.com/weparkway](http://www.facebook.com/weparkway)

View photos - [www.flickr.com/weparkway](http://www.flickr.com/weparkway)

Watch videos - [www.youtube.com/weparkway](http://www.youtube.com/weparkway)

More roundabout information: [www.ontario.ca/roundabout](http://www.ontario.ca/roundabout)